

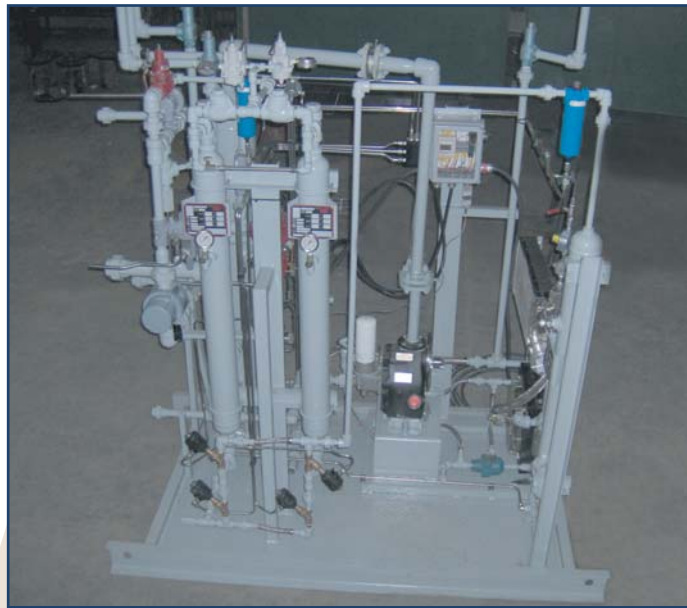
*Meeting your compression needs. Simply.*

## VGR-50 Compression & Gas Drying System



### VGR-50 STANDARD FEATURES

- RotorComp NK60 Twin Screw Compressor (25BHP)
  - Eaton Hydraulic Motor
  - 8" x 48" Inlet Scrubber c/w Auto Drain & Double Diaphragm Pump
  - 2- 4" x 42" Activated Alumina Regenerative Drying Vessels
  - 4" x 42" Discharge Gas Scrubber c/w Auto Drain
  - 6' L x 4' W x 7' H Insulated Pre-Painted Building
  - 6' L x 4' W Heavy Duty Skid with 1/4" Checker Plate Floor c/w Lift Lugs
  - RM40 Rotary Gas Meter- Gas Sales
  - Pre & Post 1 Micron Filtration c/w Auto Drain and Differential Pressure Indicator
  - Klockner Mollner "PLC" Control Panel
  - 1- 12" x 24" Catalytic Natural Gas Heaters
- See Reverse for Control Features and Specifications



- Heavy Oil "Vent" Gas Recovery
- Reduce or Eliminate on-site Propane or Fuel Gas Costs
- Sell Excess Dry "Spec" Gas Off-Site
- 4lbs H<sub>2</sub>O/MMCF or Less
- Up to 55MCFD throughput
- Achieve Environmental Compliance

# VGR-50 Compression & Gas Drying System

## CONTROL SYSTEM FEATURES

- Hydraulics:
  - 12VDC Proportional Valve- Allows for “soft start” on Compressor
- Panel & Control:
  - Klockner Mollner Programmable Logic Controller (12V DC)
  - Low Suction Pressure Shutdown- CCS
  - High Discharge Pressure Shutdown-CCS
  - High Discharge Temp Shutdown-CCS
  - High Liquid Level Shutdown-Murphy
- Inlet Pressure Control
- Low Suction Pressure Recycle
- Flow-line Pressure Control
- Back Pressure Controller
- Compressor Lube System
  - Oil Separation System and Sump is Integral of Compressor
  - Thermostatic Bypass Valve Set @ 180F- Lube Oil System
- Skid Edge Connections
  - Inlet- 2” NPT
  - Discharge- 1” NPT
  - Fuel Gas Outlet- 1” NPT
  - Liquid Outlet- 1” NPT
- Class 1 Division 2 Area Classification

## ADDITIONAL INFORMATION:

### GENERAL PERFORMANCE - Dry “Spec” Gas Output

Suction	Discharge 125 psig	Discharge 150 psig	Discharge 175 psig
0 psig	36 mcf/d	36 mcf/d	35 mcf/d
2 psig	43 mcf/d	43 mcf/d	42 mcf/d
4 psig	48 mcf/d	48 mcf/d	47 mcf/d
5 psig	50 mcf/d	50 mcf/d	49 mcf/d
10 psig	(65-70 mcf/d)	Specific application conditions need to be reviewed	

Gas output based on a 20-25% purge and recycle rate through the gas drying system  
 Flow rates indicated above based on compressor at 5000 RPM  
 Compressor rating of 2000 RPM to 8000 RPM (as packaged compressor has been limited to 5500 RPM maximum to match drying system capabilities and to limit horsepower requirements)

\*Please contact us with your specific flow and pressure requirements

## HYDRAULIC REQUIREMENTS AND PERFORMANCE:

	MINIMUM	MAXIMUM
Hydraulic Flow	10 GPM	15 GPM
Hydraulic Pressure	1100 psig	2500 psig
Compressor RPM	2000 rpm	5500 rpm
Hydraulic Motor	2000 rpm	5500 rpm
Total Horsepower (Compressor & Cooler)	7.5 hp	20 hp
Dry Gas Output	17 mcf/d (.5 E3M3/day)	70 mcf/d (2 E3M3/day)