

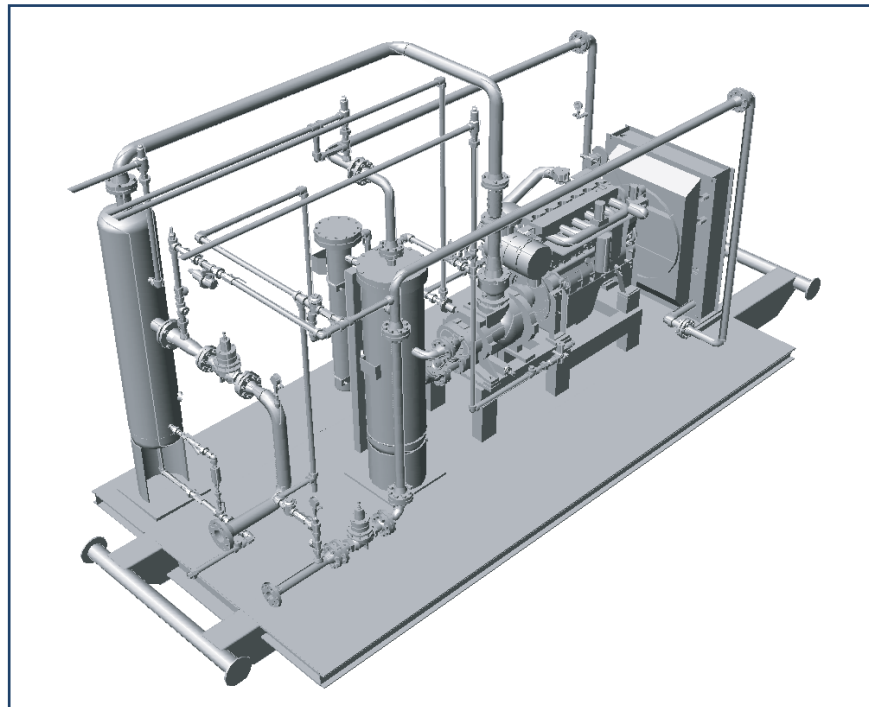
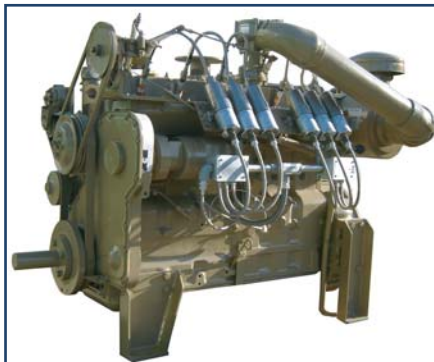
Meeting your compression needs. Simply.

99 HP Compression Systems



99 HP STANDARD FEATURES

- Gardner Denver SSH 3.0 VI (90HP)
- Cummins 8.3L-C99 (99HP @ 1800RPM)
- 14" x 60" Inlet Scrubber c/w Auto Drain
- 16" x 48" Gas/Oil Separator
- 6" x 36" Fuel Gas Scrubber c/w .3 Micron Filtration and Auto Drain
- 16' L x 8' W Self Framing Insulated Pre-Painted Building
- 20' L x 8' W Heavy Duty Skid with 1/4" Checker Plate Floor c/w Roll Ends
- Murphy Control Panel
- 2- Catadyne Natural Gas Heaters
- Standard Options Available (see reverse)



- Coal Bed Methane (CBM)
- Conventional Gas Wells
- Single Well or Gas Gathering Systems
- Casing Gas Pressure Reduction

99 HP Compression Systems

STANDARD OPTIONS AVAILABLE

- 2" Meter Run
- 3 Pen Chart Recorder c/w 5 valve manifold
- Engine Fuel Gas Meter
- Inlet Control Valve Fisher D4 and 4150 Pressure Controller
- LEL Detection
- Upgraded Sound Attenuation Package
- Liquid Blow-Case

ADDITIONAL INFORMATION:

COMPRESSOR GENERAL PERFORMANCE (SSH 3.0 VI at 1800 RPM)

Suction	Discharge 100 psig	Discharge 150 psig	Discharge 200 psig	Discharge 250 psig	Discharge 300 psig
0 psig	325 mcf/d	314 mcf/d	247 mcf/d	170 mcf/d	168 mcf/d
5 psig	443 mcf/d	439 mcf/d	347 mcf/d	250 mcf/d	190 mcf/d
10 psig	569 mcf/d	565 mcf/d	448 mcf/d	315 mcf/d	220 mcf/d
15 psig	685 mcf/d	690 mcf/d	540 mcf/d	374 mcf/d	272 mcf/d
20 psig	828 mcf/d	815 mcf/d	615 mcf/d	400 mcf/d	
25 psig	947 mcf/d	942 mcf/d	710 mcf/d	415 mcf/d	
30 psig	1078 mcf/d	1068 mcf/d	743 mcf/d	445 mcf/d	
35 psig	1198 mcf/d	1193 mcf/d	831 mcf/d	476 mcf/d	
40 psig	1324 mcf/d	1319 mcf/d	910 mcf/d	526 mcf/d	

*Please contact us with your specific flow and pressure requirements

ENGINE PERFORMANCE AND EMISSIONS DATA:

Engine	Cummins G8.3L (6 cyl Naturally Aspirated)
Engine HP @ 2500 ft	96 bhp @ 1800 rpm
NOx Emissions	19.6 grams/hp -hr = 1833 grams/hr @ full load
CO2 Emissions	1.62 grams/hp -hr = 155 grams/hr @ full load
Fuel Consumption	19 mscf/day @ full load

COMPRESSOR PACKAGE NOISE DATA:

Distance from Package	dBA
50 meters	58
200 meters	42
400 meters	35
600 meters	28
1000 meters	18

*These are estimated levels and actual levels can vary depending on site conditions and installation.

*For lower sound level requirements please contact us for optional Noise Attenuation equipment.