

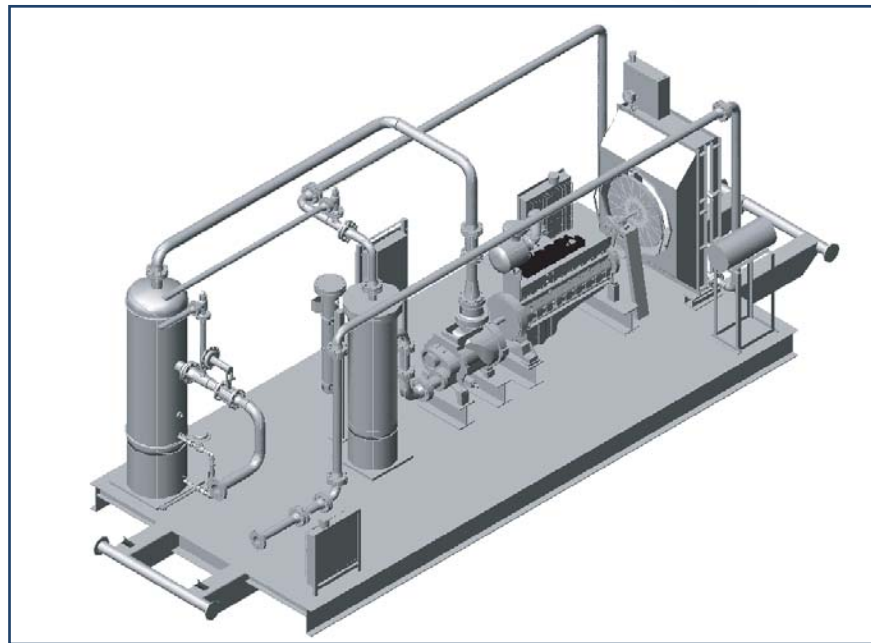
Meeting your compression needs. Simply.

188 HP Compression Systems



200 HP STANDARD FEATURES

- Gardner Denver SSP 3.0 VI (180HP)
- Cummins G855 (188HP @ 1800RPM)
- 24" x 60" Inlet Scrubber c/w D2 Dump Valve & L1200NDVO
- Inlet Control Valve 3" V-Ball Valve c/w Pressure Controller
- 24" x 72" Gas/Oil Separator c/w Integrated Coalescing Element
- 6" x 36" Fuel Gas Scrubber c/w .3 Micron Filtration and Auto Drain
- 22' L x 10' W Self Framing Insulated Pre-Painted Building-Perforated Liner
- 28' L x 10' W Heavy Duty Skid with 1/4" Checker Plate Floor c/w Roll Ends
- Murphy Control Panel c/w Digital Pyrometer
- 2- Catalytic Natural Gas Heaters - 16,000 BTU
- Socket Welded Oil Lines
- Welded Piping (2" & Larger)
- Standard Options Available (see reverse)



- Coal Bed Methane (CBM)
- Single Well or Gas Gathering Systems
- Conventional Gas Wells

188 HP Compression Systems

STANDARD OPTIONS AVAILABLE

- 3" Meter Run
- 3 Pen Chart Recorder c/w 5 valve manifold
- Engine Fuel Gas Meter
- Bypass Control Valve Fisher D4 and 4150 Pressure Controller
- LEL Detection
- Upgraded Sound Attenuation Package
- 12" x 30" Inlet Liquid Blow-Case

ADDITIONAL INFORMATION:

COMPRESSOR GENERAL PERFORMANCE (SSP 3.0 VI at 1800 RPM)

Suction	Discharge 100 psig	Discharge 150 psig	Discharge 200 psig	Discharge 250 psig
0 psig	.639 mmcf/d	.626 mmcf/d	.615 mmcf/d	.480 mmcf/d
5 psig	.892 mmcf/d	.875 mmcf/d	.710 mmcf/d	.519 mmcf/d
10 psig	1.145 mmcf/d	1.128 mmcf/d	.845 mmcf/d	.610 mmcf/d
15 psig	1.399 mmcf/d	1.395 mmcf/d	.935 mmcf/d	.630 mmcf/d
20 psig	1.652 mmcf/d	1.582 mmcf/d	1.061 mmcf/d	.650 mmcf/d
30 psig	2.158 mmcf/d	1.831 mmcf/d	1.290 mmcf/d	.735 mmcf/d
40 psig	2.664 mmcf/d	2.237 mmcf/d	1.610 mmcf/d	
50 psig	3.170 mmcf/d	2.400 mmcf/d	1.952 mmcf/d	

*Please contact us with your specific flow and pressure requirements

ENGINE PERFORMANCE AND EMISSIONS DATA:

Engine	Cummins G855 (6 cyl Naturally Aspirated)
Engine HP @ 2500 ft	188 bhp @ 1800 rpm
NOx Emissions	5.9 grams/hp - hr = 1109 grams/hr @ full load
CO2 Emissions	423 grams/hp - hr = 79,524 grams/hr @ full load
Fuel Consumption	42 mscf/day @ full load

COMPRESSOR PACKAGE NOISE DATA:

Distance from Package	dBA
50 meters	59
200 meters	43
400 meters	36
600 meters	29
1000 meters	20

*These are estimated levels and actual levels can vary depending on site conditions and installation.

*For lower sound level requirements please contact us for optional Noise Attenuation equipment.